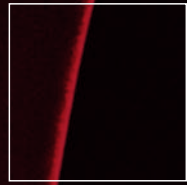




Micropatch[™]
Caffeine



Beauty Care Solutions

 **BASF**

The Chemical Company

Micropatch™ Caffeine

Micropatch slim

Slimming action

Slenderizing products are largely dominated by fat «removers» whose uncontested star is caffeine.

Slimming agents are becoming more and more sophisticated and complete, using penetration promoting vectors to more effectively reach fat tissue, or new pharmaceutical forms such as patches to target precise zones and provide long-term action.

We have developed Caffeine Micropatch™, an invisible system of programmed release destined to act throughout the entire day.

Caffeine Micropatch™, invisible caffeine patch

Long lasting slimming action

Caffeine Micropatch™ is an invisible molecular patch filled with caffeine. Micropatch™ is a technology involving a molecular meshwork from macromolecules, in which we can introduce small molecules that are slowly released in the skin by osmotic equilibrium.

Caffeine Micropatch™ is a molecular meshwork of acacia and alginate, that contains 20% caffeine.

Once applied, the Micropatch™ spreads like a second skin and slowly releases caffeine to exert an intense and long-lasting action.

REF

ACOT971S

DESCRIPTION

Solution based on propylene glycol alginate, acacia senegal gum, salicylic acid and caffeine.

REGULATORY DATA

INCI Water, Salicylic Acid, Caffeine, Butylene Glycol, Propylene Glycol Alginate, Acacia Senegal Gum.

Japanese Cosmetic

Denomination Mizu (1370), Sarichiru San (1274), Kafein (1196), BG (100040), Arugin San PG (111538), Arabia Gomu (1035).

CAS# 7732-18-5, 69-72-7, 58-08-2, 107-88-0, 9005-37-2, 9000-01-5.

EINECS# 231-791-2, 200-712-3, 200-362-1, 203-529-7, Polymer, 232-519-5.

ORIGIN

Patch based on acacia polysaccharides (plant origin), polyisobutene (synthetic origin) and caffeine (synthetic origin).

FORMULATION DATA

Cosmetic properties

- Long term contouring action,
- Corrector cellulite.

Applications

- Body contouring,
- Under eye bag corrector.

Concentration of use

1 to 5%

Incorporation method

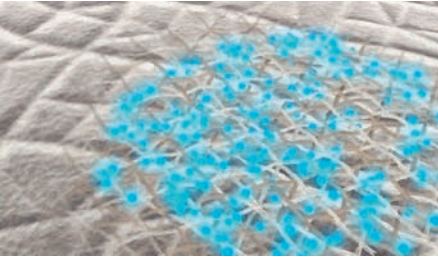
Add at the end of the formulation at 30°C under planetary stirring.

PATENT

No.

Micropatch™ technology

Molecular patch for a long lasting effect



Micropatch™ on the skin

Visualization

Macroscopy

Spatial arrangement
of macromolecules



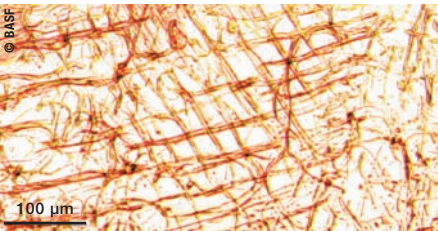
Upper face



Cross section

Freeze dried vegetal Micropatch™

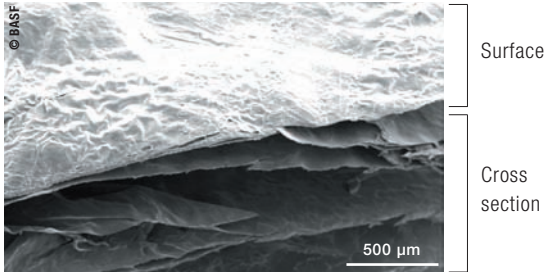
Optic microscopy



Pure Micropatch™ after freeze drying

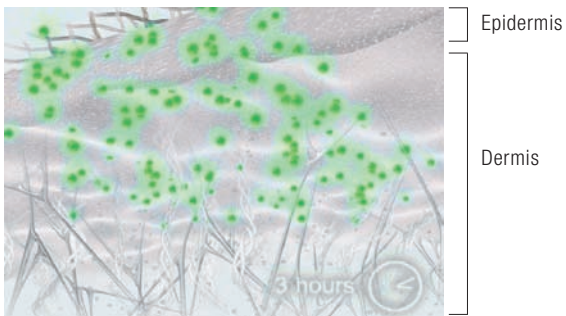
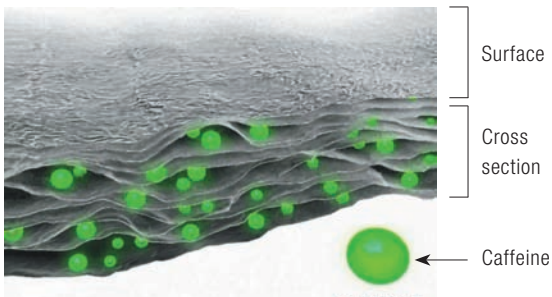
[magnification x10]

Electronic microscopy



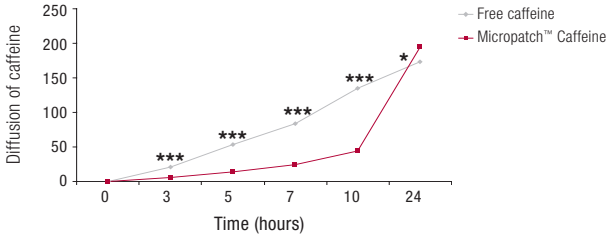
Freeze dried Vegetal Micropatch™

Micropatch™ Caffeine



Slow release of the hydrating caffeine into the skin.

Diffusion on 24 hours



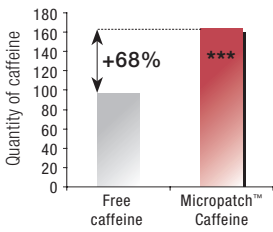
IN VITRO STUDY

- Human skin explant on Franz Cell.
- Free caffeine 10% versus Micropatch™ Caffeine 10%
- Measurement of the diffusion (0 to 24 hours) by HPLC.
- Release (after 48 hours)
- Storage (after 72 hours)

*** Statistically different from free group (p<0.001)
 * Statistically different from free group (p<0.05)

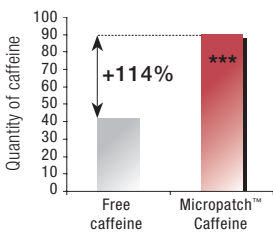
Micropatch™ increases the caffeine action time.

Release after 48 hours



*** Statistically different from free caffeine (p<0.001)

Storage in the skin after 72 hours



*** Statistically different from free caffeine (p<0.001)

Improves the «reservoir» effect.

Product presentation

A solution easy to use



Analytical data

Preliminary specifications

Dry weight (15 hours, 105°C)
20.0 – 60.0

Total Inorganic Matter Content (15 hours, 600°C)
3.0 – 10.0

Sugars (Anthrone)
0.05 – 0.35

Caffeine (HPLC)
15.0 – 25.0

Salicylic acid (by HPLC)
15.0 – 25.0

Appearance
Liquid

Color
Pale yellow

Odor
Characteristic

pH (Direct)
4.5 – 6.5

Aerobic bacteria (30°C)
≤ 100/g

Pathogens
None

Preservatives/Additives
Methylparaben (0.2%).

EUROPE & SOUTH AMERICA

BASF Beauty Care Solutions France S.A.S.

49, avenue Georges Pompidou

92593 Levallois-Perret Cedex

France

Tel: +33 (0) 1.49.64.53.90

Fax: +33 (0) 1.49.64.53.85

NAFTA

BASF Beauty Care Solutions LLC

545, Fifth Avenue, Suite 1108

New York, NY 10017

U.S.A.

Tel: +1 (212) 450 8280

Fax: +1 (212) 450 8287

JAPAN & ASIA-PACIFIC

BASF Japan Ltd.

Nanbu Bldg. 3-3 Kioicho,

Chiyoda-ku

Tokyo 102-8570

Japan

Tel: +81 (0) 3-3238-2845

Fax: +81 (0) 3-3238-2522



The Chemical Company

Edition December 7, 2007

Although all statements and information in this publication are believed to be accurate and reliable, they are presented gratis and for guidance only, and risks and liability for results obtained by use of the products or application of the suggestions described are assumed by the user. THERE ARE NO WARRANTIES OF ANY KIND. ALL EXPRESS AND IMPLIED WARRANTIES ARE DISCLAIMED. Statements or suggestions concerning possible use of the products are made without representation or warranty that any such use is free of patent infringement and are not recommendations to infringe any patent. The user should not assume that toxicity data and safety measures are indicated or that other measures may not be required. The claims and supporting data provided in this publication have not been evaluated for compliance with any jurisdiction's regulatory requirements and the results reported may not be generally true under other conditions or in other matrices. Users must evaluate what claims and information are appropriate and comply with a jurisdiction's regulatory requirements. Recipient of this publication agrees to (i) indemnify and hold harmless each entity of the BASF organization for any and all regulatory action arising from recipient's use of any claims or information in this publication, including, but not limited to, use in advertising and finished product label claims, and (ii) not present this publication as evidence of finished product claim substantiation to any regulatory authority.